



**SAN ANTONIO WATER SYSTEM  
 MULTIPLE SEWERSHED PACKAGE 2A  
 SAWS PROJECT NO. 17-4533  
 SOLICITATION NO. CO-00146**

**ADDENDUM 5  
 August 31, 2018**

To Bidder of Record:

This addendum, applicable to work referenced above, is an amendment to the bid proposal, plans and specifications and as such will be a part of and included in the Contract Documents. Acknowledge receipt of this addendum by entering the Addendum number and issue date on the space provided in submitted copies of the bid proposal.

<b>MODIFICATIONS TO PLANS FOR CONSTRUCTION</b>
--

Sheet P-40: Remove and replace Plan Sheet P-40 with the revised Plan Sheet P-40 attached to this Addendum. Note 4 has been revised to delete requirement limiting bypass lines to two (2) pipes within IH 410 ROW. Additionally, Note 4 has been revised to include limiting bypass lines to 15' minimum from edge of pavement within IH 410 ROW.

Sheet P-40A: Remove and replace Plan Sheet P-40A with the revised Plan Sheet P-40A attached to this Addendum. Note 4 has been revised to delete requirement limiting bypass lines to two (2) pipes within IH 410 ROW. Additionally, Note 4 has been revised to include limiting bypass lines to 15' minimum from edge of pavement within IH 410 ROW.

Sheet P-40B: Remove and replace Plan Sheet P-40B with the revised Plan Sheet P-40B attached to this Addendum. Note 4 has been revised to delete requirement limiting bypass lines to two (2) pipes within IH 410 ROW. Additionally, Note 4 has been revised to include limiting bypass lines to 15' minimum from edge of pavement within IH 410 ROW.

This Addendum, including this one (1) page, and is 4 pages total with attachments.

**Attachments**

- Sheet P-40
- Sheet P-40A
- Sheet P-40B

CDS Muery F-1733



August 31, 2018

\_\_\_\_\_

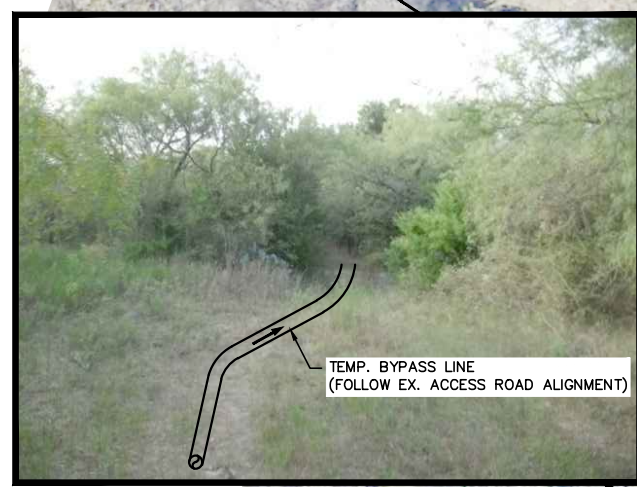
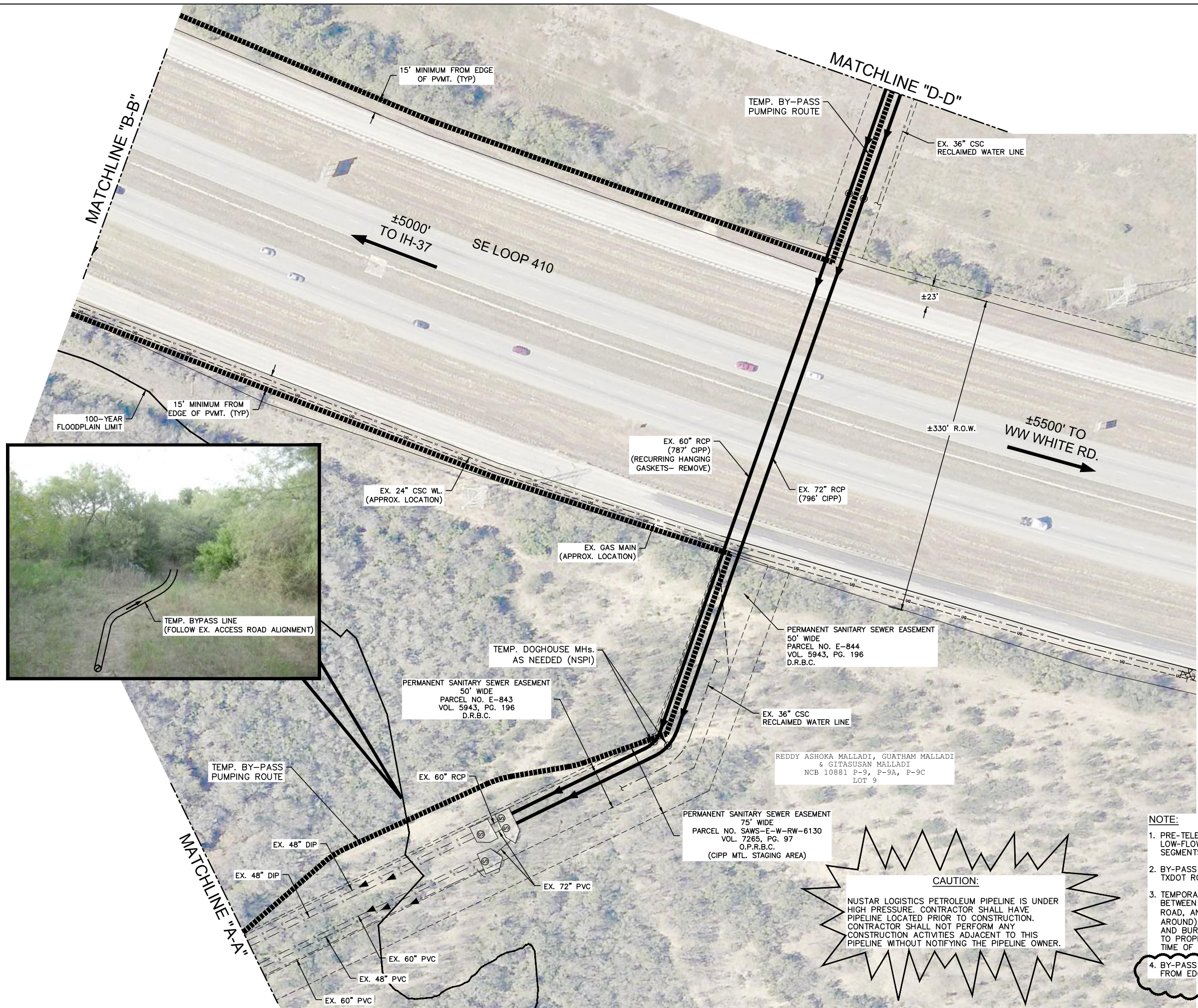
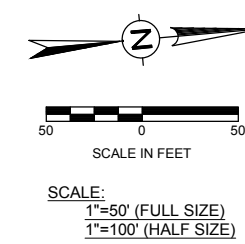
Date

\_\_\_\_\_

Signature

**END OF ADDENDUM**

F:\2017\117069 SAWS 2017 Pipeline Engr. WD Contract\117069.02 - Multiple Sewershed Package 2\Civil\_3D\Drawings\Engineer\117069-Site 8 Bypass-Realignment.dwg



**CAUTION:**

NUSTAR LOGISTICS PETROLEUM PIPELINE IS UNDER HIGH PRESSURE. CONTRACTOR SHALL HAVE PIPELINE LOCATED PRIOR TO CONSTRUCTION. CONTRACTOR SHALL NOT PERFORM ANY CONSTRUCTION ACTIVITIES ADJACENT TO THIS PIPELINE WITHOUT NOTIFYING THE PIPELINE OWNER.

- NOTE:**
- PRE-FLOWING SHALL BE SCHEDULED DURING LOW-FLOW PERIODS TO MAXIMIZE OBSERVED PIPE SEGMENTS BELOW I-410.
  - BY-PASS PUMPS SHALL NOT BE LOCATED WITHIN TXDOT ROW.
  - TEMPORARY HDPE BY-PASS PIPELINE TO RUN BETWEEN TXDOT ROW AND SE LOOP 410 ACCESS ROAD, AND UNDER THE OVERPASS BRIDGE (TURN AROUND). HDPE PIPELINE WILL BE ABOVE GROUND AND BURIED ALONG DRIVEWAYS TO ALLOW ACCESS TO PROPERTIES ALONG PROPOSED ROUTE. ESTIMATED TIME OF CONSTRUCTION DURATION 6 MONTHS.
  - BY-PASS LINES SHALL BE LIMITED TO 15' MINIMUM FROM EDGE OF PAVEMENT WITHIN IH-410 ROW.

NO.	DATE	REVISIONS	BY
5	8/31/18	ADDENDUM No. 5	
2	8/20/18	ADDENDUM No. 2	



**CDS muary**  
ENGINEERS & SURVEYORS

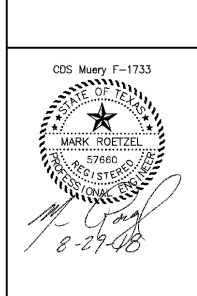
DESIGN BY: MR  
DRAWN BY: CDS  
CHECKED BY: CR  
REVIEWED BY: KR

DATE: JULY 2018  
APPROVED BY:  
CDS JOB NO: 117069.02  
DWG NAME: 117069-02-SITE 8 BYPASS

SAWS Job No. 17-4533

**SITE 8**  
TEMPORARY BY-PASS  
PUMPING PLAN (2 OF 5)

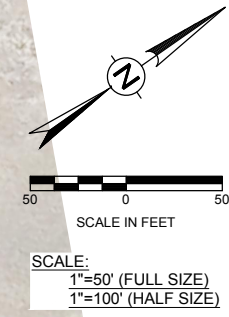
MULTIPLE SEWERSHED PACKAGE 2A



F:\2017\117069 SAWS 2017 Pipeline Engr. WD Contract\117069.02 - Multiple Sewershed Package 2\Civil\_3D\Drawings\Engineer\117069-Site 8 Bypass-Realignment.dwg

MATCHLINE "C-C"

MATCHLINE "B-B"



100-YEAR FLOODPLAIN LIMIT

15' MINIMUM FROM EDGE OF PVMT. (TYP)

SE LOOP 410 ACCESS RD.

SE LOOP 410

SE LOOP 410 ACCESS RD.

EX. GAS MAIN (APPROX. LOCATION)

15' MINIMUM FROM EDGE OF PVMT. (TYP)

EX. 24" CSC WL. (APPROX. LOCATION)

100-YEAR FLOODPLAIN LIMIT

**CAUTION:**  
NUSTAR LOGISTICS PETROLEUM PIPELINE IS UNDER HIGH PRESSURE. CONTRACTOR SHALL HAVE PIPELINE LOCATED PRIOR TO CONSTRUCTION. CONTRACTOR SHALL NOT PERFORM ANY CONSTRUCTION ACTIVITIES ADJACENT TO THIS PIPELINE WITHOUT NOTIFYING THE PIPELINE OWNER.

- NOTE:**
1. BY-PASS PUMPS SHALL NOT BE LOCATED WITHIN TXDOT ROW.
  2. TEMPORARY HDPE BY-PASS PIPELINE TO RUN BETWEEN TXDOT ROW AND SE LOOP 410 ACCESS ROAD, AND UNDER THE OVERPASS BRIDGE (TURN AROUND). HDPE PIPELINE WILL BE ABOVE GROUND AND BURIED ALONG DRIVEWAYS TO ALLOW ACCESS TO PROPERTIES ALONG PROPOSED ROUTE. ESTIMATED TIME OF CONSTRUCTION DURATION 6 MONTHS.
  3. BY-PASS LINES SHALL BE LIMITED TO 15' MINIMUM FROM EDGE OF PAVEMENT WITHIN IH-410 ROW.

5

**CDS muery**  
ENGINEERS • SURVEYORS

DESIGN BY: MR	DATE: JULY 2018
DRAWN BY: CDS	APPROVED BY:
CHECKED BY: CR	CDS JOB NO: 117069.02
REVIEWED BY: KR	DWG NAME: 117069.02



MULTIPLE SEWERSHED PACKAGE 2A

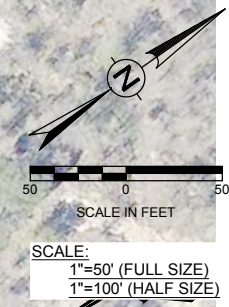
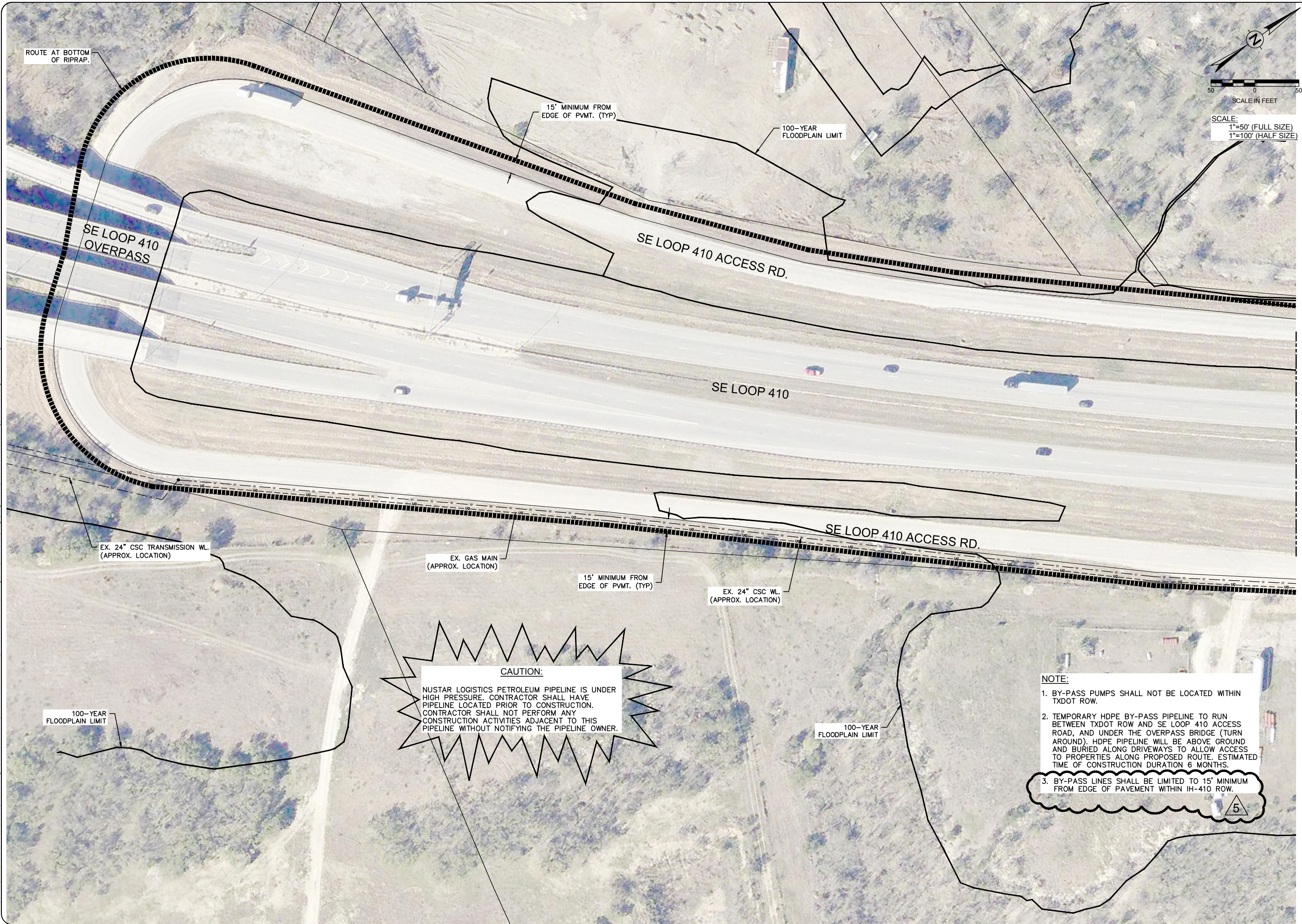
SAWS Job No. 17-4533  
SITE 8  
TEMPORARY BY-PASS PUMPING PLAN (3 OF 5)

CDS Muery F-1733

MARK ROETZEL  
57660  
12/31/2018

*M. Roetzel*  
8-29-18

F:\2017\117069 SAWS 2017 Pipeline Engr. WD Contract\117069.02 - Multiple Sewershed Package 2\Civil 3D\Drawings\Engineer\117069-Site 8 Bypass-Realignment.dwg



MATCHLINE "C-C"

**CAUTION:**  
 NUSTAR LOGISTICS PETROLEUM PIPELINE IS UNDER HIGH PRESSURE. CONTRACTOR SHALL HAVE PIPELINE LOCATED PRIOR TO CONSTRUCTION. CONTRACTOR SHALL NOT PERFORM ANY CONSTRUCTION ACTIVITIES ADJACENT TO THIS PIPELINE WITHOUT NOTIFYING THE PIPELINE OWNER.

**NOTE:**

1. BY-PASS PUMPS SHALL NOT BE LOCATED WITHIN TXDOT ROW.
2. TEMPORARY HDPE BY-PASS PIPELINE TO RUN BETWEEN TXDOT ROW AND SE LOOP 410 ACCESS ROAD, AND UNDER THE OVERPASS BRIDGE (TURN AROUND). HDPE PIPELINE WILL BE ABOVE GROUND AND BURIED ALONG DRIVEWAYS TO ALLOW ACCESS TO PROPERTIES ALONG PROPOSED ROUTE. ESTIMATED TIME OF CONSTRUCTION DURATION 6 MONTHS.
3. BY-PASS LINES SHALL BE LIMITED TO 15' MINIMUM FROM EDGE OF PAVEMENT WITHIN IH-410 ROW.

<b>CDS muery</b> ENGINEERS • SURVEYORS	DESIGN BY: MR	DATE: JULY 2018	APPENDUM No. 5	BY:
	DRAWN BY: CDS	APPROVED BY:	8/31/18	ADDENDUM No. 2
	CHECKED BY: CR	CDS JOB NO: 117069.02	8/20/18	REVISIONS
	REVIEWED BY: KR	DWG NAME: 117069.02		NO.
<b>STA</b>	MULTIPLE SEWERSHED PACKAGE 2A			
SAWS Job No. 17-4533				
SITE 8				
TEMPORARY BY-PASS PUMPING PLAN (4 OF 5)				
CDS Muery F-1733				
Sheet P-40B				
47 of 87				